

Pegler Valve

Brass lockshield draincock type A to BS 2879/2, male taper thread to BS21

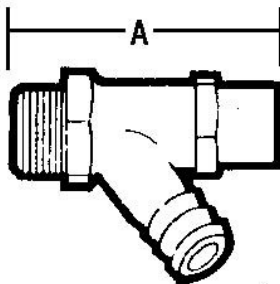
833 LS Draincock



General Information

| Size | Pattern No. | Pack 1 Qty | Pack 2 Qty | Code | Barcode | Price (£) each ex VAT |
|------|-------------|------------|------------|--------|---------------|-----------------------|
| 1/2" | 833LS | 20 | 0 | 542017 | 5013866017308 | £31.28 |

833 LS Draincock



Dimensions

| Code | Description | A |
|--------|--|---|
| 542017 | 1/2" 833LS BRASS TYPE A DRAINCOCK CW LS 57 | |

Pegler Yorkshire reserve the right to change specifications

Pressure and Temperature

| Description | Minimum Operating Pressure (bar) | Maximum Cold Working Pressure (bar) | Maximum Hot Working Pressure (bar) |
|-------------------|----------------------------------|--------------------------------------|---|
| 833 LS Drain cock | No Minimum Operating Pressure | 20.0 bar at temperatures up to 120oC | Not Suitable for Maximum Hot Working Pressure |

Care and Maintenance

Care

No regular aesthetic care is required for this product

Maintenance

No regular maintenance is required for this product.

For any further help please contact the Service Support Team on: 0800 1560050.

Regulations

Regulations

It is important to ensure that the water supplies to your fittings are connected in accordance with the water regulations (WRAS) requirements and good plumbing practice.

This product has been designed in accordance with BS2879 and Kitemark standard

Materials

Component Material

Component Material

| | |
|------------------|-------|
| Body | Brass |
| Headwork | Brass |
| Spindle | Brass |
| Washer | EPDM |
| Spindle 'O' ring | EPDM |
| Cap 'O' ring | EPDM |
| LS Cover | Brass |

Technical Suitability

| | | | | | | | | |
|--------------|--------------|------------|------------|------------|------------------|---------------------|------------------------|-------------------|
| Steam | Water | Oil | Air | Gas | Inert Gas | Combustible† | Gas Corrosive†† | Gas Oxygen |
| no | yes | yes | no | no | no | no | no | no |

Pegler Yorkshire reserve the right to change specifications

Gas application guide

Class 1. INERT Air, argon, carbon dioxide, helium, nitrogen

Class 2. COMBUSTIBLE Hydrogen, methane, natural gas, town gas

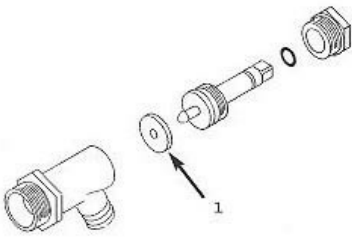
Class 3. CORROSIVE Chlorine, sulphur dioxide Class 4. OXYGEN

Class 1. INERT Air, argon, carbon dioxide, helium, nitrogen

† Valves are suitable for British Gas Applications Family Gases 1, 2 and 3.

†† Suitable in applications where moisture is completely absent.

833 LS Draincock



| Spare Key | Description | Code | Barcode | Date From | Date To | Price (£) ex VAT |
|-----------|-------------------|--------|---------------|------------|------------|------------------|
| 1 | | | | | | |
| 1 | VW25 VALVE WASHER | 817100 | 5013866058516 | 01/01/1900 | To Current | £1.31 |