

Prestex

Draincock type A to BS 2879/2, plain inlet to BS 864/2

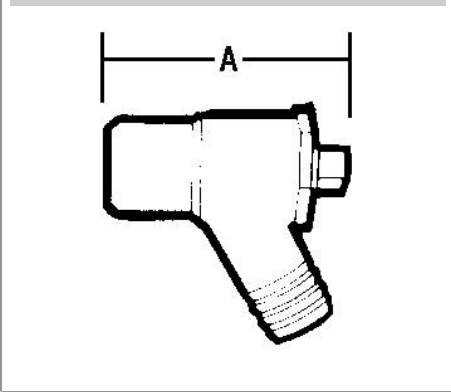
838 Draincock



General Information

Size	Pattern No.	Pack 1 Qty	Pack 2 Qty	Code	Barcode	Price (£) each ex VAT
1/2"	838	20	0	545007	5013866017360	£21.17

838 Draincock



Dimensions

Code	Description	A
545007	1/2 838 BRASS TYPE A DRAINCOCK PLAIN IN 56	

Pegler Yorkshire reserve the right to change specifications

Pressure and Temperature

Description	Minimum Operating Pressure (bar)	Maximum Cold Working Pressure (bar)	Maximum Hot Working Pressure (bar)
838 Draincock	No Minimum Operating Pressure	20.0 bar at temperatures up to 120oC	Not Suitable for Maximum Hot Working Pressure

Care and Maintenance

Care

No regular aesthetic care is required for this product

Maintenance

No regular maintenance is required for this product.

For any further help please contact the Service Support Team on: 0800 1560050.

Regulations

Regulations

It is important to ensure that the water supplies to your shower are connected in accordance with the water regulations (WRAS) requirements and good plumbing practice.

This product has been designed in accordance with BS2879 and Kitemark standard.

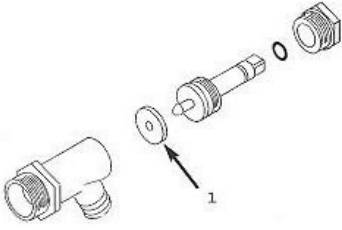
Materials

Component Material

Component Material

Body Brass

838 Draincock



Spare Key	Description	Code	Barcode	Date From	Date To	Price (£) ex VAT
1						
1	VW25 VALVE WASHER	817100	5013866058516	01/01/1900	To Current	£1.31

Pegler Yorkshire Group Ltd, St Catherine's Ave, Doncaster, S Yorkshire, DN4 8DF
Telephone: Phone +44 (0) 844 243 4400 Fax: +44 (0) 844 243 9870 Website: www.pegler-yorkshire.co.uk
Registered office : Pegler Yorkshire Group Ltd, St Catherine's Ave, Doncaster, S Yorkshire, DN4 8DF Company no : 00401507