

Pegler Valve

Float valve, Equilibrium pattern, reduced bore

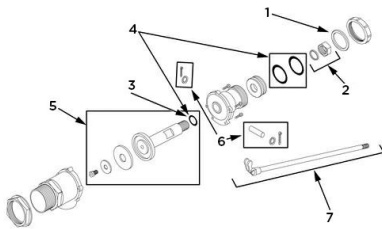
901 Float valve



General Information

Size	Pattern No.	Pack 1 Qty	Pack 2 Qty	Code	Barcode	Price (£) each ex VAT
1.1/4"	901	1	0	520010	5022050545879	£559.01
1.1/2"	901	1	0	520011	5022050545886	£587.20
2"	901	1	0	520012	5022050545893	£989.51
2.1/2"	901	1	0	520300	5022050545909	£1162.78
3"	901	1	0	520305	5022050545916	£1885.72
4"	901	1	0	520310	5022050545923	£2469.72
6"	901	1	0	520315	5022050545930	£5172.92

901 Float valve



Dimensions

Code	Description	A Bore	B	C	
520010	1.1/4 901 GM EQUILIBRIUM FLOATVALVE	1 1/64"	1 7/8"	10 13/16"	3.40
520011	1.1/2 901 GM EQUILIBRIUM FLOATVALVE	1 3/16"	1 7/8"	10 13/16"	3.44
520012	2 901 GUNMETAL EQUILIBRIUM FLOATVALVE	1 1/2"	2 1/8"	11 1/8"	5.98
520300	2.1/2 901 GM EQUILIBRIUM FLOATVALVE-RB	2 1/4"	3"	19"	6.18
520305	3 901 GM EQUILIBRIUM FLOATVALVE-RB	2 1/2"	3 1/2"	20"	8.80
520310	4 901 GM EQUILIBRIUM FLOATVALVE-RB	3"	4"	21"	12.20
520315	6 901 GM EQUILIBRIUM FLOATVALVE-RB	4"	5"	23"	24.50

Pegler Yorkshire reserve the right to change specifications

Pressure and Temperature

Description	Minimum Operating Pressure (bar)	Maximum Cold Working Pressure (bar)	Maximum Hot Working Pressure (bar)
901 Equilibrium Float valve	No Minimum Operating Pressure	10.0 bar at temperatures up to 85oC	Not Suitable for Maximum Hot Working Pressure

Care and Maintenance

Care

No regular aesthetic care is required for this product

Maintenance

No regular maintenance is required for this product.

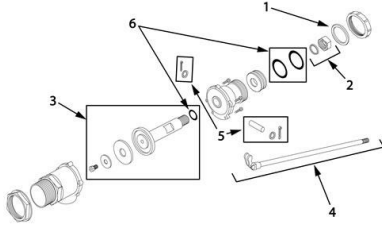
For any further help please contact the Service Support Team on: 0800 1560050.

Materials

Component	Material
-----------	----------

Component	Material
Body	Gunmetal
Piston	Gunmetal
Seat	Gunmetal
Locknut	Brass
Fixed flange backnut	Gunmetal
Lever heel	Brass
Inlet shank	Gunmetal
Loose backnut	Gunmetal
Coupling nut	Gunmetal
End cap	Gunmetal
Piston washer	EPDM
O ring	Nitrile
Piston guide	Gunmetal
Lever arm	HT Brass
Sealing washer	Fibre (non asbestos)
Split pin	Brass
Retaining washer	Stainless steel
Retaining bolt	Stainless steel

901 Float valve



Spare Key	Description	Code	Barcode	Date From	Date To	Price (£) ex VAT
1						
1	ST22 FLOATVALVE SEAT - BRONZE	816108	5013866057786	01/01/1900	To Current	£59.94
1	ST23 FLOATVALVE SEAT - BRONZE	816109	5013866057793	01/01/1900	To Current	£59.94
1	ST24 FLOATVALVE SEAT - BRONZE	816110	5013866057809	01/01/1900	To Current	£91.70
1	SW11 END CAP WASHER	816126	5013866057960	01/01/1900	To Current	£36.57
1	SW12 END CAP WASHER	816127	5013866057977	01/01/1900	To Current	£30.14
1	SW13 END CAP WASHER	816128	5013866057984	01/01/1900	To Current	£31.79
1	SW14 END CAP WASHER	816129	5013866057991	01/01/1900	To Current	£36.94

Spare Key	Description	Code	Barcode	Date From	Date To	Price (£) ex VAT
2						
2	SW26 SEAT WASHER	816105	5013866057755	01/01/1900	To Current	£6.44
2	SW26 SEAT WASHER	816105	5013866057755	01/01/1900	To Current	£6.44
2	SW27 SEAT WASHER	816106	5013866057762	01/01/1900	To Current	£10.32
2	PRS1 PISTON NUT & LOCKWASHER SET	816142	5013866058080	01/01/1900	To Current	£21.54
2	PRS2 PISTON NUT & LOCKWASHER SET	816143	5013866058097	01/01/1900	To Current	£23.73
2	PRS3 PISTON NUT & LOCKWASHER SET	816144	5013866058103	01/01/1900	To Current	£25.79
2	PRS4 PISTON NUT & LOCKWASHER SET	816145	5013866058110	01/01/1900	To Current	£27.97

Spare Key	Description	Code	Barcode	Date From	Date To	Price (£) ex VAT
3						
3	VW10 PISTON WASHER	816230	5013866058257	01/01/1900	To Current	£17.67
3	VW10 PISTON WASHER	816230	5013866058257	01/01/1900	To Current	£17.67
3	VW12 PISTON WASHER	816232	5013866058264	01/01/1900	To Current	£27.10
3	P14 PISTON DISC ASSEMBLY	816118	5013866057885	01/01/1900	To Current	£266.39
3	P15 PISTON DISC ASSEMBLY	816119	5013866057892	01/01/1900	To Current	£300.83
3	P16 PISTON DISC ASSEMBLY	816120	5013866057908	01/01/1900	To Current	£365.23
3	P17 PISTON DISC ASSEMBLY	816121	5013866057915	01/01/1900	To Current	£644.69

Spare Key	Description	Code	Barcode	Date From	Date To	Price (£) ex VAT
-----------	-------------	------	---------	-----------	---------	------------------

Spare Key	Description	Code	Barcode	Date From	Date To	Price (£) ex VAT
4						
4	WOR10 WASHER& O RING SET	816101	5013866057717	01/01/1900	To Current	£23.73
4	WOR11 WASHER & O RING SET	816102	5013866057724	01/01/1900	To Current	£25.79
4	WOR12 WASHER & O RING SET	816103	5013866057731	01/01/1900	To Current	£42.13
4	LA16 FLOATVALVE LEVER ARM ASSEMBLY	816130	5013866058004	01/01/1900	To Current	£202.02
4	LA17 FLOATVALVE LEVER ARM ASSEMBLY	816131	5013866058011	01/01/1900	To Current	£322.32
4	LA18 FLOATVALVE LEVER ARM ASSEMBLY	816132	5013866058028	01/01/1900	To Current	£429.72
4	LA19 FLOATVALVE LEVER ARM ASSEMBLY	816133	5013866058035	01/01/1900	To Current	£1074.47
Spare Key	Description	Code	Barcode	Date From	Date To	Price (£) ex VAT
5						
5	P11 PISTON ASSEMBLY	816115	5013866057854	01/01/1900	To Current	£174.11
5	P12 PISTON ASSEMBLY	816116	5013866057861	01/01/1900	To Current	£186.92
5	P13 PISTON ASSEMBLY	816117	5013866057878	01/01/1900	To Current	£251.45
5	LHPS1 LEVER HEEL PIN SET	816134	5013866058042	01/01/1900	To Current	£40.83
5	LHPS2 LEVER HEEL PIN SET	816135	5013866058059	01/01/1900	To Current	£43.04
5	LHPS3 LEVER HEEL PIN SET	816136	5013866058066	01/01/1900	To Current	£47.26
5	LHPS4 LEVER HEEL PIN SET	816137	5013866058073	01/01/1900	To Current	£51.51
Spare Key	Description	Code	Barcode	Date From	Date To	Price (£) ex VAT
6						
6	CTP5 SPLIT COTTER PIN	816243	5013866058301	01/01/1900	To Current	£20.18
6	CTP5 SPLIT COTTER PIN	816243	5013866058301	01/01/1900	To Current	£20.18
6	CTP6 SPLIT COTTER PIN	816245	5013866058318	01/01/1900	To Current	£21.54
6	ORS1 O RING SET (3 PIECE)	816122	5013866057922	01/01/1900	To Current	£24.02
6	ORS2 O RING SET (3 PIECE)	816123	5013866057939	01/01/1900	To Current	£25.79
6	ORS3 O RING SET (3 PIECE)	816124	5013866057946	01/01/1900	To Current	£30.14
6	ORS4 O RING SET (3 PIECE)	816125	5013866057953	01/01/1900	To Current	£34.39
Spare Key	Description	Code	Barcode	Date From	Date To	Price (£) ex VAT
7						
7	LA14 FLOATVALVE LEVER ARM ASSEMBLY	816112	5013866057823	01/01/1900	To Current	£111.74
7	LA14 FLOATVALVE LEVER ARM ASSEMBLY	816112	5013866057823	01/01/1900	To Current	£111.74
7	LA15 FLOATVALVE LEVER ARM ASSEMBLY	816113	5013866057830	01/01/1900	To Current	£163.34