

Endex

Reducer, larger end male copper for insertion into fitting x female copper

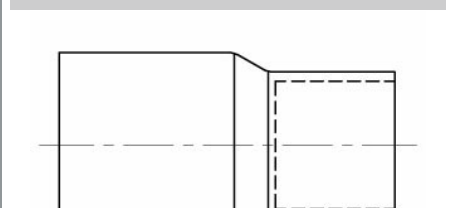
N6 Reducer



General Information

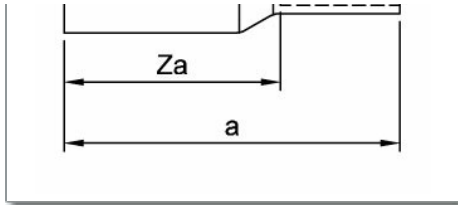
Size	Pattern No.	Pack 1 Qty	Pack 2 Qty	Code	Barcode	Price (£) each ex VAT
66.7 x 28mm	N6	1	0	88310	5022050593429	£94.32
66.7 x 35mm	N6	1	0	88311	5022050593436	£94.32
66.7 x 42mm	N6	1	0	88312	5022050593443	£94.32
66.7 x 54mm	N6	1	0	88313	5022050593450	£114.07
76.1 x 35mm	N6	1	0	89624	5022050594624	£137.84
76.1 x 42mm	N6	1	0	89625	5022050594631	£137.84
76.1 x 54mm	N6	1	0	89626	5022050594648	£123.65
76.1 x 54mm	N6 Long Socket	1	0	89907	5022050341914	£136.01
76.1 x 66.7mm	N6	1	0	89627	5022050594655	£123.65
108 x 42mm	N6	1	0	89630	5022050594662	£275.74
108 x 54mm	N6	1	0	89631	5022050594679	£259.09
108 x 66.7mm	N6	1	0	89632	5022050594686	£259.09
108 x 76.1mm	N6	1	0	89633	5022050594693	£259.09
133 x 42mm	N6	1	0	89699	5022050594822	£516.62
133 x 54mm	N6	1	0	89700	5022050594839	£516.62
133 x 66.7mm	N6	1	0	89701	5022050594846	£516.62
133 x 76.1mm	N6	1	0	89702	5022050594853	£516.62
133 x 108mm	N6	1	0	89703	5022050594860	£516.62
159 x 54mm	N6	1	0	89704	5022050594877	£660.79
159 x 66.7mm	N6	1	0	89705	5022050594884	£660.79
159 x 76.1mm	N6	1	0	89706	5022050594891	£660.79
159 x 108mm	N6	1	0	89707	5022050594907	£660.79
159 x 133mm	N6	1	0	89708	5022050594914	£660.79

N6 Reducer



Dimensions

Code	Description	a	Za
88310	67 x 28mm N6	75	54
88311	67 x 35mm N6	77	51
88312	67 x 42mm N6	77	50



Code	Description	a	Za
88313	67 x 54mm N6	77	51
89624	76 x 35mm N6	57	41
89625	76 x 42mm N6	53	38
89626	76 x 54mm N6	48	31
89907	76 x 54mm N6 Long Socket		
89627	76 x 67mm N6	44	26
89630	108 x 42mm N6	79	61
89631	108 x 54mm N6	70	52
89632	108 x 67mm N6	60	44
89633	108 x 76mm N6	58	42
89699	133 x 42mm N6	101	83
89700	133 x 54mm N6	95	77
89701	133 x 67mm N6	93	74
89702	133 x 76mm N6	96	65
89703	133 x 108mm N6	84	44
89704	159 x 54mm N6	91	56
89705	159 x 67mm N6	100	71
89706	159 x 76mm N6	98	69
89707	159 x 108mm N6	97	61
89708	159 x 133mm N6	97	53

Pegler Yorkshire reserve the right to change specifications

Guarantee

Pegler 25 Year Guarantee - Terms and Conditions

Products are subject to a 25 year guarantee that is between Pegler and the final purchaser of the product.

The guarantee is subject to proof of purchase being supplied.

This guarantee does not affect any statutory rights the consumer may have in law.

The guarantee covers manufacturing or material defects when installed in accordance with our instructions on specified tube materials and applications, and does not cover parts subject to normal wear and tear.

This product range has been designed for the use of homeowners, domestic and commercial applications and therefore the Guarantee is subject to the product being properly selected for their intended service conditions.

The guarantee is not applicable where the product is fitted contrary to the conditions in the fitting instructions.

This is reinforced where valves are covered by the European Pressure Equipment Directive (PED97/23/EC) where Installation, Operating and Maintenance Instructions are supplied with each product and/or carton.

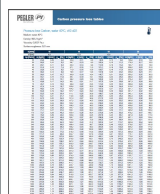
Provided it is installed correctly and receives adequate preventative maintenance it should give years of trouble-free service.

Abusive behaviour and accidental damage to the product are not covered by this guarantee.

The extent of this liability is limited to the cost of the replacement of the defective item and not to installation or consequential damages.

Pressure and Temperature

Size	-40°C (Min)	30°C	65°C	110°C (Max)
6mm to 28mm	25bar	25bar	25bar	16bar
35mm to 54mm	25bar	25bar	16bar	10bar
67mm	16bar	16bar	16bar	10bar
Size	-15°C (Min)	30°C	65°C	110°C (Max)
6mm to 54mm	16bar	16bar	10bar	6bar
67mm	10bar	10bar	6bar	4bar



Pressure Loss Tables: Copper Water

Pressure Loss Tables: Copper Compressed Air

Pressure Loss Tables: Copper Gas

Care and Maintenance

Care

No regular aesthetic care is required for this product

Maintenance

No regular maintenance is required for this product.

For any further help please contact the Service Support Team on: 0800 1560050.