

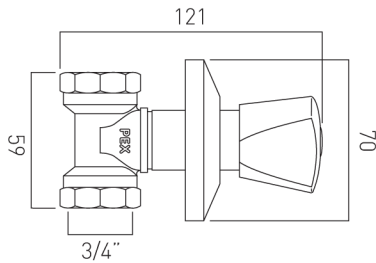
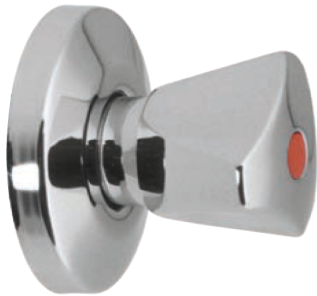
PEX-760-1/2-C/P

1/2" concealed stop valve
with tricor handle

(supplied with both hot and cold indices)

standard packing details

item weight (kg)	0.36
inner box contains box weight (kg)	1 0.40
outer carton contains carton weight (kg)	50 21.0
full pallet contains pallet weight (kg)	900 393.0



PEX-760-3/4-C/P

3/4" concealed stop valve
with tricor handle

(supplied with both hot and cold indices)

standard packing details

item weight (kg)	0.42
inner box contains box weight (kg)	1 0.46
outer carton contains carton weight (kg)	50 23.5
full pallet contains pallet weight (kg)	900 438.0