

Yorkshire

Tap connector copper x BSP union nut. Spigot and washer joint

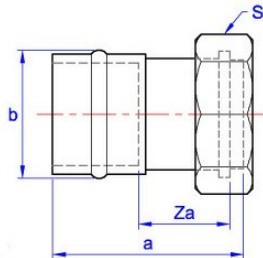
YP62 Connector



General Information

Size	Pattern No.	Pack 1 Qty	Pack 2 Qty	Code	Barcode	Price (£) each ex VAT
15mm x 1/2"	YPS62	10	160	08700	5022050087003	£8.79
15mm x 3/4"	YP62	10	100	08702	5022050087027	£20.08
22mm x 3/4"	YP62	10	80	08710	5022050087102	£10.36

YP62 Connector



Dimensions

Code	Description	a	b	Za	S
08700	15mm x 1/2" YP62	37	19	16	24
08702	15mm x 3/4" YP62	37	19	18	31
08710	22mm x 3/4" YP62	48	26	26	30

Pegler Yorkshire reserve the right to change specifications

Guarantee

Pegler 25 Year Guarantee - Terms and Conditions

Products are subject to a 25 year guarantee that is between Pegler and the final purchaser of the product.

The guarantee is subject to proof of purchase being supplied.

This guarantee does not affect any statutory rights the consumer may have in law.

The guarantee covers manufacturing or material defects when installed in accordance with our instructions on specified tube materials and applications, and does not cover parts subject to normal wear and tear.

This product range has been designed for the use of homeowners, domestic and commercial applications and therefore the Guarantee is subject to the product being properly selected for their intended service conditions.

The guarantee is not applicable where the product is fitted contrary to the conditions in the fitting instructions.

This is reinforced where valves are covered by the European Pressure Equipment Directive (PED97/23/EC) where Installation, Operating and Maintenance Instructions are supplied with each product and/or carton.

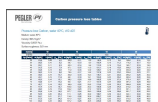
Provided it is installed correctly and receives adequate preventative maintenance it should give years of trouble-free service.

Abusive behaviour and accidental damage to the product are not covered by this guarantee.

The extent of this liability is limited to the cost of the replacement of the defective item and not to installation or consequential damages.

Pressure and Temperature

Size	-40°C (Min)	30°C	65°C	110°C (Max)
6mm to 54mm	16 bar	16 bar	10 bar	6 bar
67mm	10 bar	10 bar	6 bar	4 bar



A small thumbnail image showing a table with multiple columns and rows of data, likely representing pressure loss values for different pipe sizes and flow rates.

Pressure Loss Tables: Copper Water

A small thumbnail image showing a table with multiple columns and rows of data, likely representing pressure loss values for different pipe sizes and flow rates.

Pressure Loss Tables: Copper Compressed Air

A small thumbnail image showing a table with multiple columns and rows of data, likely representing pressure loss values for different pipe sizes and flow rates.

Pressure Loss Tables: Copper Gas

Care and Maintenance

Care

No regular aesthetic care is required for this product

Maintenance

No regular maintenance is required for this product.

For any further help please contact the Service Support Team on: 0800 1560050.