

# Yorkshire

Male adaptor, male copper for insertion into fitting x BSP taper male thread. There is no solder ring in this fitting

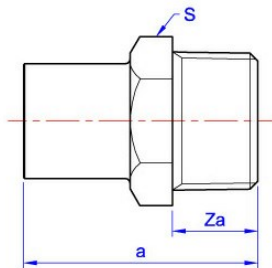
YP8 Adaptor



### General Information

Size	Pattern No.	Pack 1 Qty	Pack 2 Qty	Code	Barcode	Price (£) each ex VAT
15mm x 1/2"	YP8	10	200	<a href="#">08230</a>	5022050082305	£26.61
22mm x 3/4"	YP8	10	160	<a href="#">08231</a>	5022050082312	£34.01
28mm x 1"	YP8	5	80	<a href="#">08232</a>	5022050082329	£56.83

YP8 Adaptor



### Dimensions

Code	Description	a	Za	S
08230	15mm x 1/2" YP8	37	15	24
08231	22mm x 3/4" YP8	45	15	29
08232	28mm x 1" YP8	50	18	35

Pegler Yorkshire reserve the right to change specifications

### Guarantee

#### Pegler 25 Year Guarantee - Terms and Conditions

Products are subject to a 25 year guarantee that is between Pegler and the final purchaser of the product.

The guarantee is subject to proof of purchase being supplied.

This guarantee does not affect any statutory rights the consumer may have in law.

The guarantee covers manufacturing or material defects when installed in accordance with our instructions on specified tube materials and applications, and does not cover parts subject to normal wear and tear.

This product range has been designed for the use of homeowners, domestic and commercial applications and therefore the Guarantee is subject to the product being properly selected for their intended service conditions.

The guarantee is not applicable where the product is fitted contrary to the conditions in the fitting instructions.

This is reinforced where valves are covered by the European Pressure Equipment Directive (PED97/23/EC) where Installation, Operating and Maintenance Instructions are supplied with each product and/or carton.

Provided it is installed correctly and receives adequate preventative maintenance it should give years of trouble-free service.

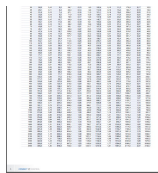
Abusive behaviour and accidental damage to the product are not covered by this guarantee.

The extent of this liability is limited to the cost of the replacement of the defective item and not to installation or consequential damages.

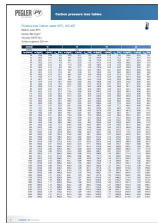
### Pressure and Temperature

Size	-40°C (Min)	30°C	65°C	110°C (Max)
6mm to 54mm	16 bar	16 bar	10 bar	6 bar
67mm	10 bar	10 bar	6 bar	4 bar

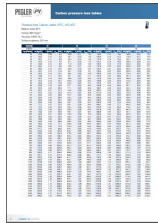


A small thumbnail image showing a portion of a technical table with multiple columns and rows of data, likely representing pressure loss values for copper piping with water.

**Pressure Loss Tables: Copper Water**

A small thumbnail image showing a portion of a technical table with multiple columns and rows of data, likely representing pressure loss values for copper piping with compressed air.

**Pressure Loss Tables: Copper Compressed Air**

A small thumbnail image showing a portion of a technical table with multiple columns and rows of data, likely representing pressure loss values for copper piping with gas.

**Pressure Loss Tables: Copper Gas**

## **Care and Maintenance**

### **Care**

No regular aesthetic care is required for this product

### **Maintenance**

No regular maintenance is required for this product.

For any further help please contact the Service Support Team on: 0800 1560050.