

Technical Data Sheet

Series: **Kalos**

Article code: **76CR7417**

Description:

2-way built-in shower mixer with diverter.

Materials:

Brass

Surface finish Chrome:

14 micron Nickel

0.3 microm Chrome

Finishings



CR



Features



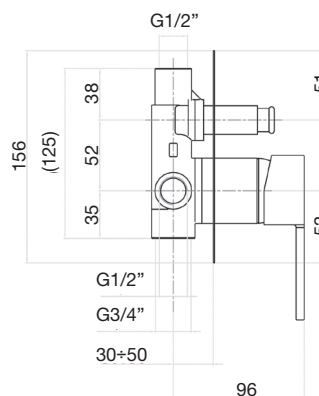
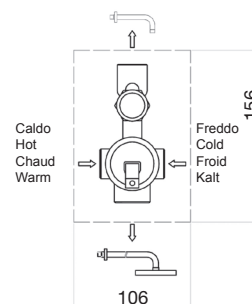
Cartridge diam. 42 mm with 2 ceramic disks, with 25° opening angle, and 90° mixing angle. We use only certified white lubricant into our mixers and cartridges.



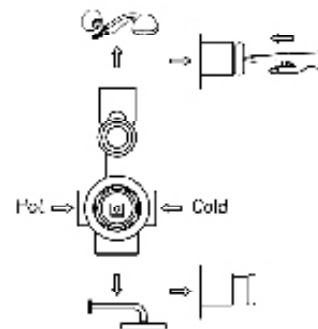
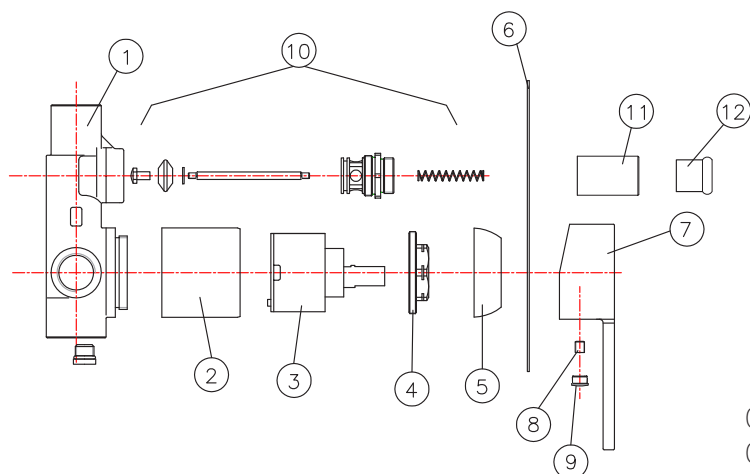
Cast solid brass body
Brass ½ screwed connection easy to be changed

1 mm stainless steel plate

Suitable for electrical water heater

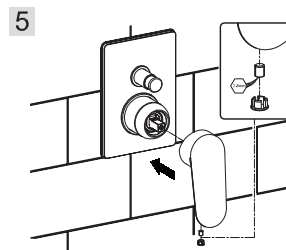
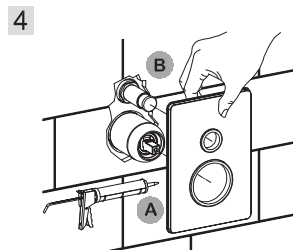
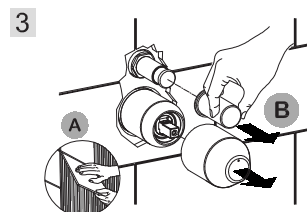
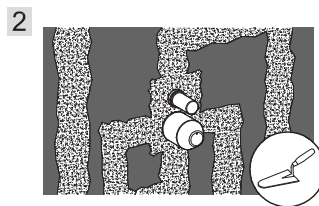
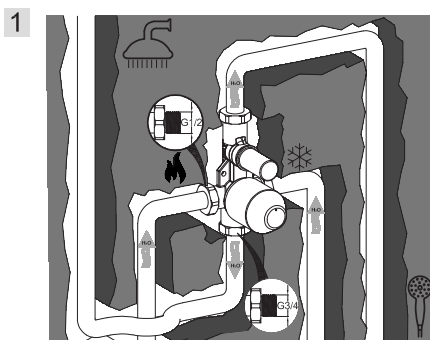
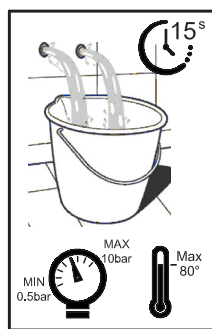


Technical Data Sheet



www.fiore.it

01	Built-in body	Brass
02	Ring	Brass
03	Cartridge Ø42 mm	/
04	Locking nut	Brass
05	Cap	Chrome ABS
06	Plate	Stainless steel
07	Lever	Zamac
08	Plaquette	Chrome ABS
09	Screw M5x6	Steel
10	Diverter	/
11	Diverter cover	Brass
12	Knob for diverter	Chrome ABS



Cleaning recommendation for products and care of finish

Chrome: the chrome surfaces can be cleaned with a mild detergent or with neutral soap and water.

Color finishes: taps with colored finishes should be cleaned only with a cloth and water.

Never use detergents containing mineral acids (ex. hydrochloric acid), aggressive acids (ex. acetic acid), bases (ex. ammonia) phosphoric acid or other aggressive substances, as they can cause significant damage.