

# Yorkshire

Straight coupling, copper x copper

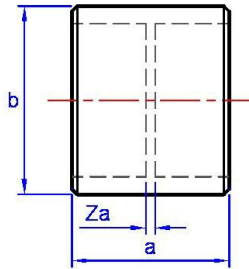
1GHDDW Coupling



## General Information

Size	Pattern No.	Pack 1 Qty	Pack 2 Qty	Code	Barcode	Price (£) each ex VAT
15mm	1GHDDW	1	150	<a href="#">56005DW</a>	5022050590886	£17.97
22mm	1GHDDW	1	100	<a href="#">56007DW</a>	5022050590893	£28.76
28mm	1GHDDW	1	50	<a href="#">56008DW</a>	5022050590909	£40.77
42mm	1GHDDW	1	20	<a href="#">56010DW</a>	5022050590879	£71.68

1GHDDW Coupling



## Dimensions

Code	Description	a	b	Za
56005DW	15mm 1GHDDW	15	19	2
56007DW	22mm 1GHDDW	20	27	2
56008DW	28mm 1GHDDW	23	34	2
56010DW	42mm 1GHDDW	31	50	2

Pegler Yorkshire reserve the right to change specifications

## Guarantee

### Pegler 25 Year Guarantee - Terms and Conditions

Products are subject to a 25 year guarantee that is between Pegler and the final purchaser of the product.

The guarantee is subject to proof of purchase being supplied.

This guarantee does not affect any statutory rights the consumer may have in law.

The guarantee covers manufacturing or material defects when installed in accordance with our instructions on specified tube materials and applications, and does not cover parts subject to normal wear and tear.

This product range has been designed for the use of homeowners, domestic and commercial applications and therefore the Guarantee is subject to the product being properly selected for their intended service conditions.

The guarantee is not applicable where the product is fitted contrary to the conditions in the fitting instructions.

This is reinforced where valves are covered by the European Pressure Equipment Directive (PED97/23/EC) where Installation, Operating and Maintenance Instructions are supplied with each product and/or carton.

Provided it is installed correctly and receives adequate preventative maintenance it should give years of trouble-free service.

Abusive behaviour and accidental damage to the product are not covered by this guarantee.

The extent of this liability is limited to the cost of the replacement of the defective item and not to installation or consequential damages.

## Care and Maintenance

### Care

No regular aesthetic care is required for this product

### Maintenance

No regular maintenance is required for this product.

