

STUART

PH TS Stainless Steel Pumps

Designed for continuous use, the stainless steel peripheral range is ideal for handling non abrasive liquids and is developed specifically for beer, lager or cider dispensing.

Also used for pumping demineralised water.

50 Hz



2 YEAR
GUARANTEE

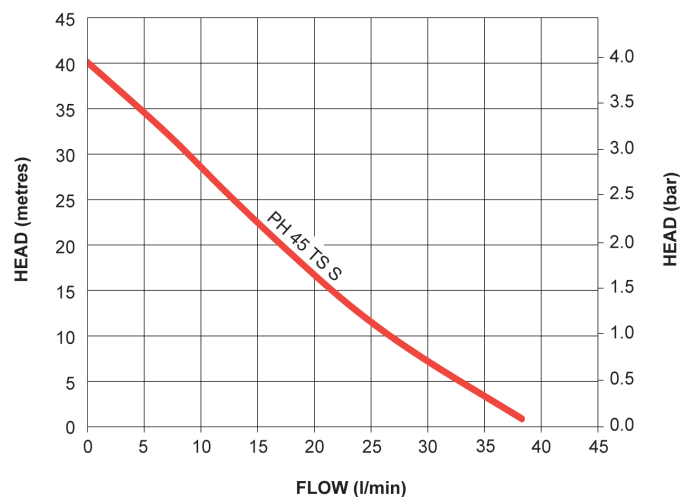
From **58** dB(A)
Quiet Operation

Features

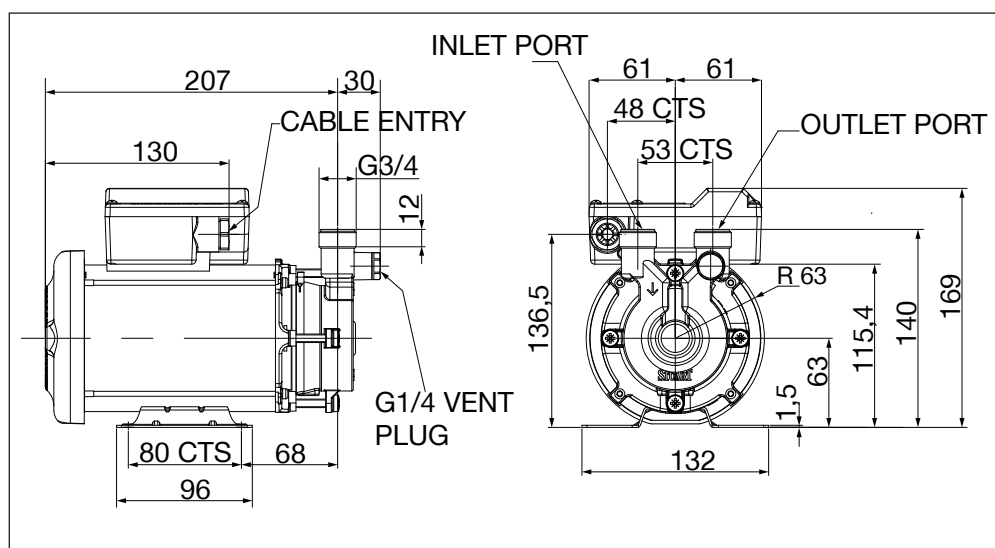
- Peripheral pump
- Flow rates up to 38 litres per minute and heads up to 40 metres
- Top suction, vertical delivery connections
- Extended life seal
- Standard control
- Stainless Steel pump head and impeller
- Continuously rated
- 2 year guarantee

Application

- Designed for continuous use, the stainless steel peripheral range is ideal for handling non-abrasive liquids and is developed specifically for beer, lager or cider dispensing
- Also used for pumping demineralised water



Pump Model		PH 45 TS S 50 Hz 46628	PH 45 TS S 50 Hz 46629
General	Guarantee	2 years	
	WRAS approval	Approved materials	
	Approvals	CE	
Features	Pump type	Peripheral	
	Priming vent plug	✓	✓
Materials	Pump body	Stainless steel	
	Impeller	Stainless steel	
	Mechanical seal	EPDM / PTFE / Al. Oxide	Viton / Carbon / Silicon Carbide
	Typical noise	58 dB(A)	
Performance	Maximum head – closed valve	3.93 bar / 40 metres	
	Performance @ 9 l/min	3.89 bar / 29.5 metres	
	Performance @ 18 l/min	1.77 bar / 18 metres	
	Maximum flow	38 l/min	
	Minimum static inlet pressure	0.05 bar (0.5 metres)	
	Maximum static inlet pressure	2.0 bar (20 metres)	
	Maximum working pressure*	600 kPa (6 bar)	
	Maximum viscosity	50 secs redwood no. 1 9.5 centistokes	
	Maximum ambient air temperature	40 °C	
	Min / Max water temperature	Min 4 °C / Max 80 °C	
	Maximum suction lift**	4.6 metres	
Connections	Pump connections	G ¾ male	
Motor	Type	Induction, auto-reset thermal trip	
	Duty rating	Continuous (S1) @ 2.5 l/min and above	
Electrical	Power supply (Vac/Ph/Hz)	230 V a.c. / 1 / 50 Hz	
	Power consumption – P1	520 Watts	
	Current – full load	2.4 Amps	
	Fuse rating	5 Amps	
	Power cable length	1.5 metres (pre-wired)	
Physical	Enclosure protection	IP44	
	Length	249 mm	
	Width	130 mm	
	Height – excluding hoses	166 mm	
	Weight – including fittings	6.3 Kg	



* The maximum pressure that can be applied to the pump under any installation conditions.

** With footvalve fitted

Stuart Turner Limited reserves the right to amend specifications without notice.

Stuart Turner Ltd, Henley-on-Thames, Oxfordshire RG9 2AD Tel: +44 (0) 1491 572655 Fax: +44 (0) 1491 573704
 TechAssist Helpline +44 (0) 800 31 969 80
www.stuart-turner.co.uk

Pt. No. 18046 Issue 4219/6-01