

Yorkshire

Straight male union connector, copper x BSP taper male thread. Cone joint to BS 1010

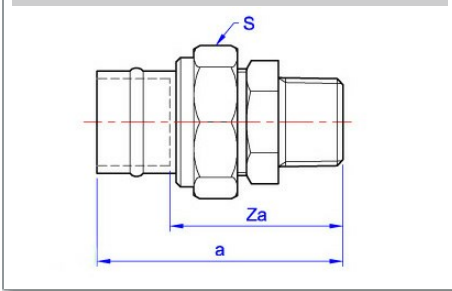
YP69 Connector



General Information

Size	Pattern No.	Pack 1 Qty	Pack 2 Qty	Code	Barcode	Price (£) each ex VAT
15mm x 1/2"	YP69	10	80	08813	5022050088130	£44.87
22mm x 3/4"	YP69	10	60	08814	5022050088147	£58.17
28mm x 1"	YP69	5	25	08816	5022050088161	£86.75
35mm x 1 1/4"	YP69	1	15	08817	5022050556868	£129.72
42mm x 1 1/2"	YP69	1	15	08818	5022050556875	£203.74
54mm x 2"	YP69	1	8	08819	5022050556882	£292.77

YP69 Connector



Dimensions

Code	Description	a	Za	S
08813	15mm x 1/2" YP69	61	46	31
08814	22mm x 3/4" YP69	70	48	37
08816	28mm x 1" YP69	77	54	46
08817	35mm x 1 1/4" YP69	73	46	53
08818	42mm x 1 1/2" YP69	86	55	65
08819	54mm x 2" YP69	107	70	82

Pegler Yorkshire reserve the right to change specifications

Guarantee

Pegler 25 Year Guarantee - Terms and Conditions

Products are subject to a 25 year guarantee that is between Pegler and the final purchaser of the product.

The guarantee is subject to proof of purchase being supplied.

This guarantee does not affect any statutory rights the consumer may have in law.

The guarantee covers manufacturing or material defects when installed in accordance with our instructions on specified tube materials and applications, and does not cover parts subject to normal wear and tear.

This product range has been designed for the use of homeowners, domestic and commercial applications and therefore the Guarantee is subject to the product being properly selected for their intended service conditions.

The guarantee is not applicable where the product is fitted contrary to the conditions in the fitting instructions.

This is reinforced where valves are covered by the European Pressure Equipment Directive (PED97/23/EC) where Installation, Operating and Maintenance Instructions are supplied with each product and/or carton.

Provided it is installed correctly and receives adequate preventative maintenance it should give years of trouble-free service.

Abusive behaviour and accidental damage to the product are not covered by this guarantee.

The extent of this liability is limited to the cost of the replacement of the defective item and not to installation or consequential damages.

Pressure and Temperature

Size -40°C (Min) 30°C 65°C 110°C (Max)

Size	-40°C (Min)	30°C	65°C	110°C (Max)
6mm to 54mm	16 bar	16 bar	10 bar	6 bar
67mm	10 bar	10 bar	6 bar	4 bar

This is a thumbnail of a detailed pressure loss table for copper water. It contains multiple columns of data, likely representing different pipe sizes and flow rates, with corresponding pressure loss values.

Pressure Loss Tables: Copper Water

This is a thumbnail of a detailed pressure loss table for copper compressed air. It contains multiple columns of data, likely representing different pipe sizes and flow rates, with corresponding pressure loss values.

Pressure Loss Tables: Copper Compressed Air

This is a thumbnail of a detailed pressure loss table for copper gas. It contains multiple columns of data, likely representing different pipe sizes and flow rates, with corresponding pressure loss values.

Pressure Loss Tables: Copper Gas

Care and Maintenance

Care

No regular aesthetic care is required for this product

Maintenance

No regular maintenance is required for this product.

For any further help please contact the Service Support Team on: 0800 1560050.